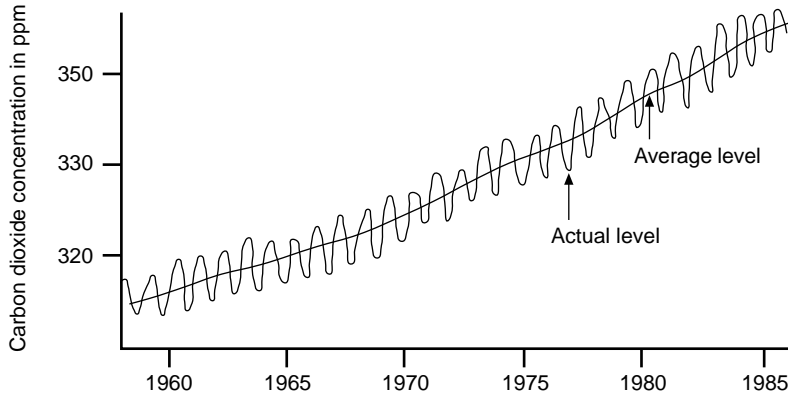
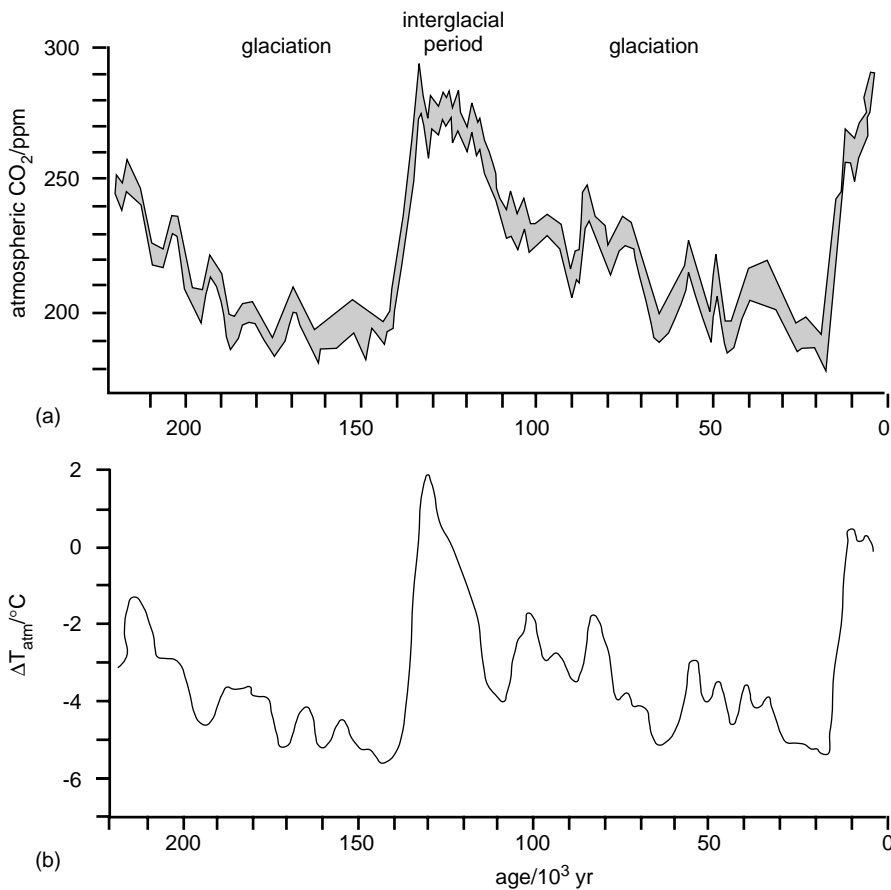


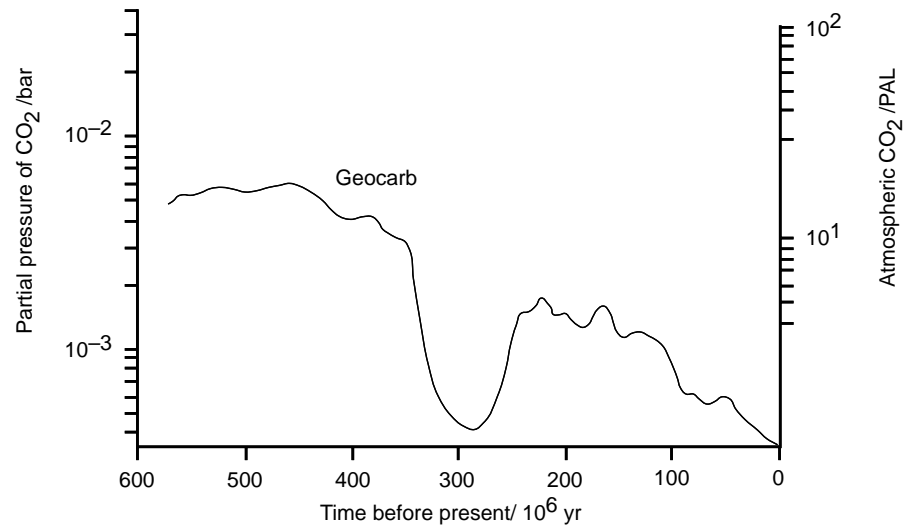
Looking at the data – the Earth is getting warmer



The atmospheric concentration of carbon dioxide between 1958 and 1992 at Mauna Loa, Hawaii



Data from Antarctica showing CO₂ levels and temperatures over the last 240,000 years
(Reproduced with permission from *Nature*.)



The results of the GEOCARB model of atmospheric carbon dioxide levels and reconstructed global mean surface temperatures over the last 600 million years

(Reproduced with permission from the Open University P. Francis and N. Dise, *Atmosphere, Earth and Life*, Milton Keynes: The Open University, 1997.)

Question

1. Do you think there is a link between atmospheric CO₂ levels and the average surface temperature of the Earth? Use the above data to support your answer.

