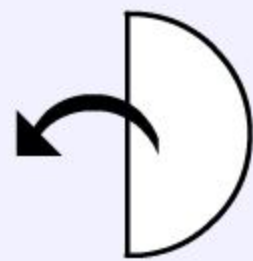


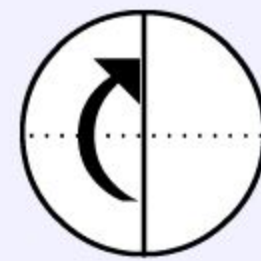
1

**Fold the filter paper in half.**



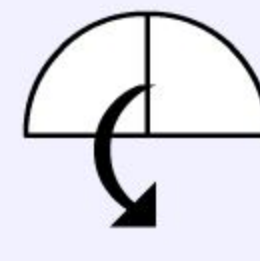
2

**Open out the filter paper.**



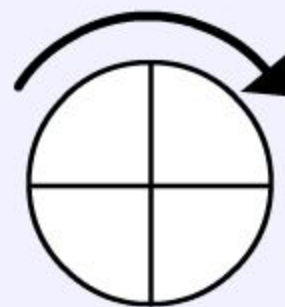
3

**Fold in half at a right angle to the original fold and on the same side.**



4

**Open out the filter paper.**



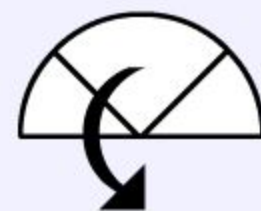
5

**Rotate the paper.**



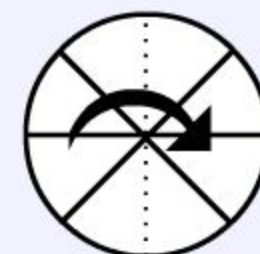
6

**Fold in half in between the other folds and on the same side.**



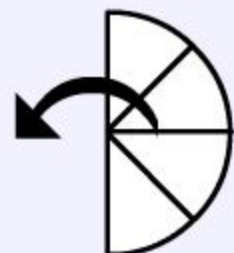
7

**Open out the filter paper.**



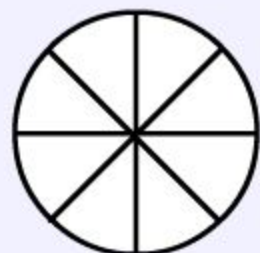
8

**Fold once more to divide up the paper into 8.**



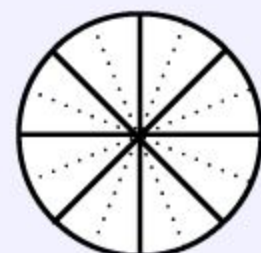
9

**Open out the filter paper.**



10

**The filter paper is then folded in between all the folds but on the opposite side.**



11

**All the folds are sharpened.**



12

**The filter paper is gathered into a cone shape.**