

40th INTERNATIONAL CHEMISTRY OLYMPIAD

UK Round One - 2008

MARKING SCHEME

Notes

Chemical equations may be given as sensible multiples of those given here.

State symbols do not need to be included in the chemical equations to obtain the mark(s).

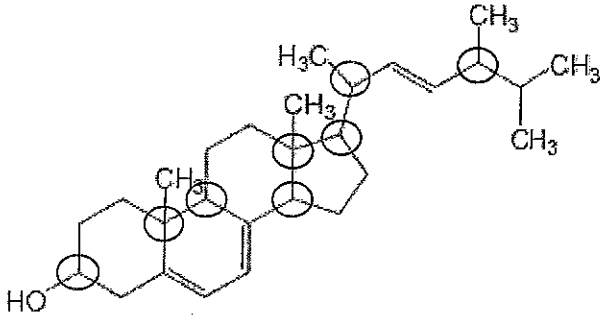
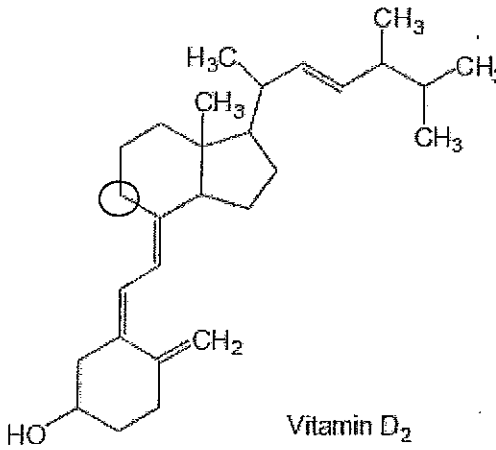
Answers should be given to an appropriate number of significant figures although the marker should only penalise this once.

Total 62 marks.

Question 1		Answer	Marks
(a)		$\text{SiO}_2 + \text{C} \rightarrow \text{Si} + \text{CO}_2$ <i>(also accept $\text{SiO}_2 + 2\text{C} \rightarrow \text{Si} + 2\text{CO}$)</i>	1
(b)	i)	109 °	1
	ii)	$\text{SiHCl}_3 + \text{H}_2 \rightarrow \text{Si} + 3\text{HCl}$	1
(c)	i)	$4\text{SiH}(\text{OCH}_2\text{CH}_3)_3 \rightarrow \text{SiH}_4 + 3\text{Si}(\text{OCH}_2\text{CH}_3)_4$	1
	ii)	$\text{SiH}_4 + 2\text{O}_2 \rightarrow \text{SiO}_2 + 2\text{H}_2\text{O}$	1
(d)	i)	$C_x = 2.00 \times 10^{-3} \times 3300 (1 - 0.95)^{-0.998} = 131 \text{ ppm}$	2
	ii)	If k is small, $k - 1 \approx -1$ $\therefore 10 = 8.00 \times 10^{-6} \times 1300 (1 - x)^{-1}$ $1 - x = 0.00104$ 0.104% would have to be discarded	2

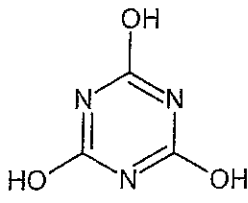
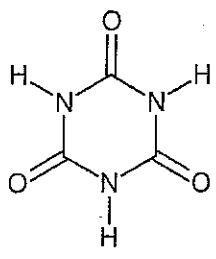
9 marks

Note: Tests are to be taken under controlled conditions. Students must not have access to the information contained in this marking scheme prior to, or during, the test.

Question 2		Answer	Marks
(a)		 <p>Ergosterol</p>	3
(b)		 <p>Vitamin D₂</p>	2
(c)		Zero	1
(d)		<p>In 40 min, (42-7) µg/g dry mushroom of vitamin D₂ produced $(42-7)/40 = 0.875 \mu\text{g}(\text{g dry mushroom})^{-1}\text{min}^{-1}$ $\therefore k = 0.0146 \mu\text{g}(\text{g dry mushroom})^{-1}\text{s}^{-1}$ <i>(1 mark for the value of k, and 1 mark for the correct units)</i></p>	2
(e)		<p>In 40 min, (14-3) µg/g dry mushroom of vitamin D₂ produced \therefore In 60 min, $((14-3) \times 60/40) + 3 = 19.5 \mu\text{g/g dry mushroom}$ In 10g of dry mushrooms, $19.5 \times 10 = 195 \mu\text{g}$ of vitamin D₂</p>	1
(f)		<p>At 25 °C, $k_{(T)} = A \times e^{(-E_a / (8.314 \times 298))}$ At 35 °C, $2k_{(T)} = A \times e^{(-E_a / (8.314 \times 308))}$ $e^{(-E_a / (8.314 \times 308))} = 2 \times e^{(-E_a / (8.314 \times 298))}$ $-E_a / (8.314 \times 308) = \log_e 2 - E_a / (8.314 \times 298)$ $0.0004036 E_a - 0.0003905 E_a = 0.693$ $0.0000131 E_a = 0.693$ $E_a = 53 \text{ kJ mol}^{-1}$</p>	2

Note: Tests are to be taken under controlled conditions. Students must not have access to the information contained in this marking scheme prior to, or during, the test.

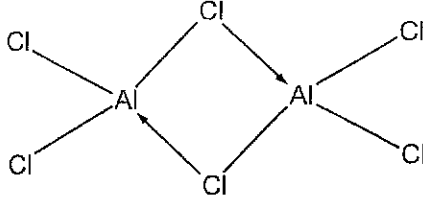
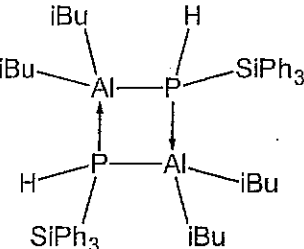
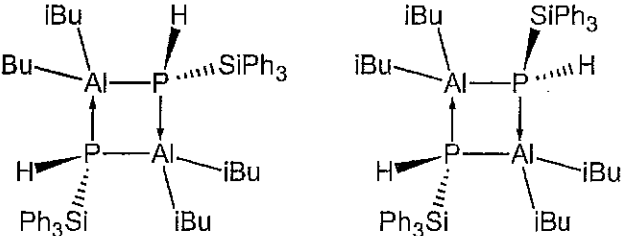
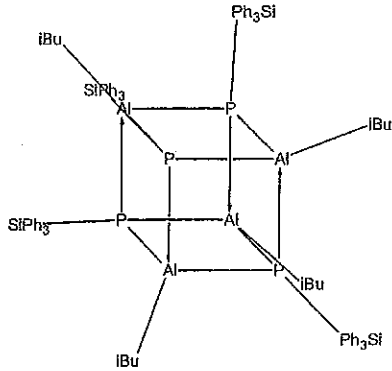
11 marks

Question 3		Answer	Marks
(a)		$\text{Hg}(\text{CNO})_2 \rightarrow \text{Hg} + \text{N}_2 + 2\text{CO}$	1
(b)		$2(-111) - 386 = -608 \text{ kJ mol}^{-1}$	2
(c)		$\text{O} \leftarrow \text{N} \equiv \text{C} - \text{Hg} - \text{C} \equiv \text{N} \rightarrow \text{O}$ (also accept $^-\text{O} - ^+\text{N} \equiv \text{C} - \text{Hg} - \text{C} \equiv \text{N}^+ - \text{O}^-$)	1
(d)		$\text{N} \equiv \text{C} - \text{O} - \text{Hg} - \text{O} - \text{C} \equiv \text{N}$ (also accept $\text{Hg}^{2+} (\text{C} \equiv \text{N}^+ - \text{O}^-)_2$)	1
(e)		<p>Aromatic structure:</p>  <p>Non-aromatic structure:</p> 	2

7 marks

Question 4		Answer	Marks
(a)		6	1
(b)	i)	Al_2Cl_6	1

Note: Tests are to be taken under controlled conditions. Students must not have access to the information contained in this marking scheme prior to, or during, the test.

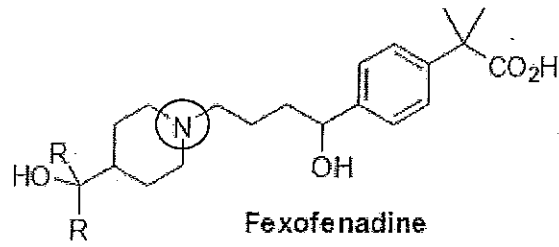
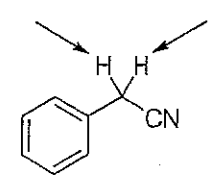
	ii)	 <p>(Dative bond arrows not essential)</p>	1
	iii)	8	1
(c)		$\text{AlP} + 3\text{H}_2\text{O} \longrightarrow \text{Al}(\text{OH})_3 + \text{PH}_3$ <p>(also accept $2\text{AlP} + 3\text{H}_2\text{O} \rightarrow \text{Al}_2\text{O}_3 + 2\text{PH}_3$)</p>	1
(d)		6	1
(e)	i)		1
	ii)		2
(f)			3
(g)		methylpropene	1

13 marks

Note: Tests are to be taken under controlled conditions. Students must not have access to the information contained in this marking scheme prior to, or during, the test.

Question 5		Answer	Marks
(a)	i)	301	1
	ii)	114	1
	iii)	227	1
(b)		$9!/2 = 181440$	2
(c)		1- Cysteine 2- Isoleucine 3- Leucine 4- Glutamine 5- Aspartic Acid 6- Cysteine 7- Proline <i>(Lose one mark for each incorrect amino acid)</i>	5

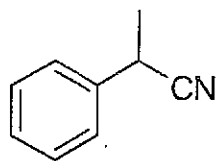
10 marks

Question 6		Answer	Marks
(a)	i)	 <p style="text-align: center;">Fexofenadine</p>	1
	ii)	$(120.14 - 112.00)/112.00 = 36.458 / (\text{RMM of fexofenadine})$ $\therefore \text{RMM of fexofenadine} = 501.6$	1
	iii)	RMM of structure = $(2 \times M_r(\text{R})) + 347.4$ $\therefore 2 \times M_r(\text{R}) = 501.6 - 347.4 = 154.2$ $M_r(\text{R}) = 77.1$ $\text{R} = \text{C}_6\text{H}_5$ <i>(accept 'phenyl group')</i>	1
(b)			1

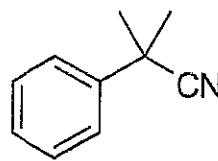
Note: Tests are to be taken under controlled conditions. Students must not have access to the information contained in this marking scheme prior to, or during, the test.

(c)

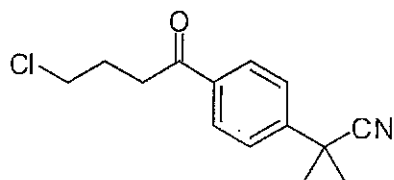
A



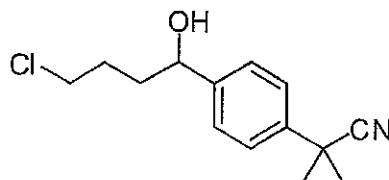
B



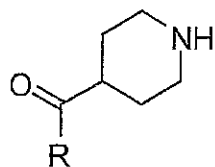
C



D



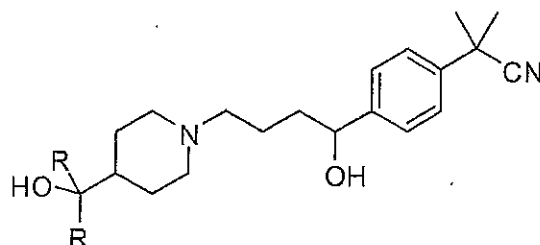
E



F



G



Award 1 mark for each correct structure

Award 1 additional mark if all structures in parts c) are given correctly.

7

1

12 marks