


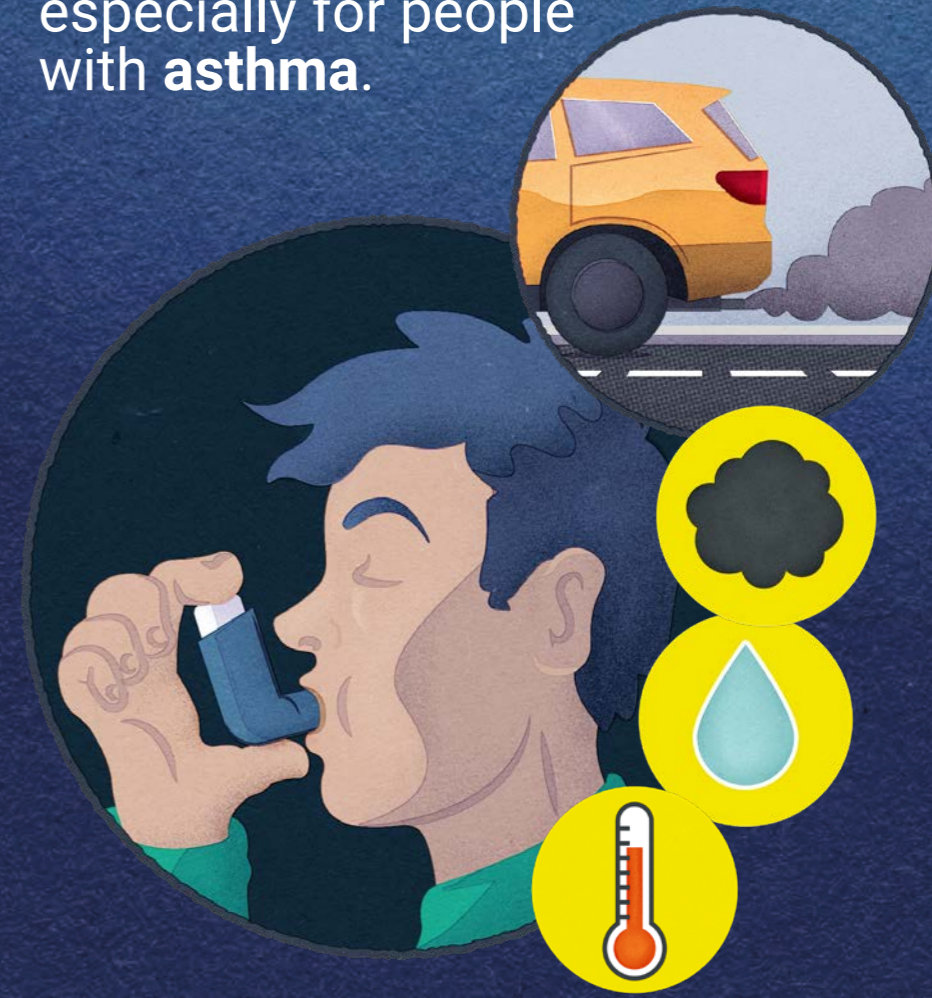


Atmospheric pollution

Atmospheric pollution is when chemical compounds, usually made by human activity, have a negative impact on us and our environment. Often, these chemical compounds add to  climate change,  acid rain and  smog.

Sulfur dioxide and nitrogen dioxide add to smog which can cause breathing problems, especially for people with asthma.



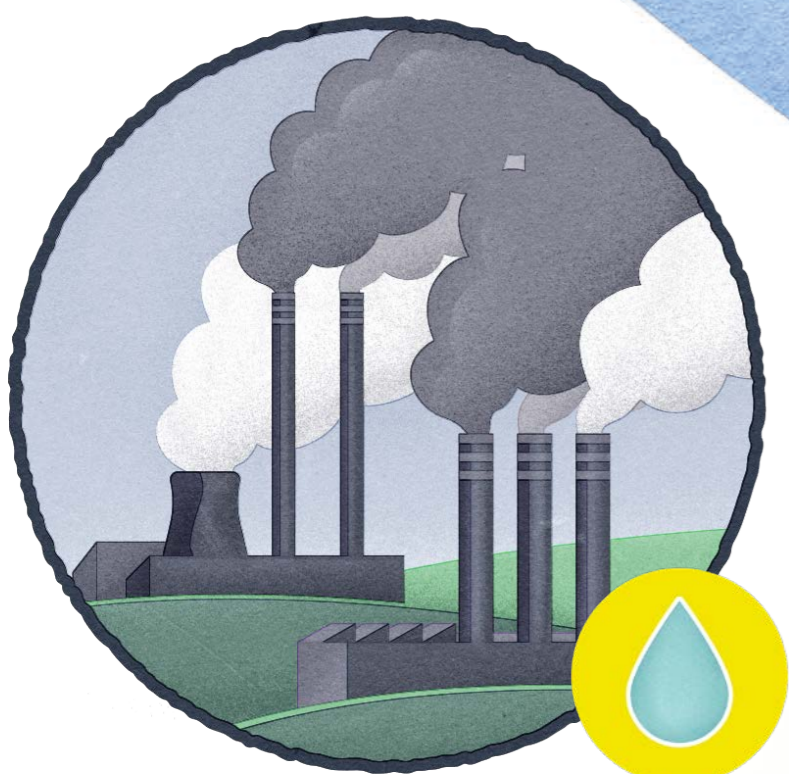
Greenhouse gases trap heat and warm Earth

Earth absorbs and reflects radiation

Pollution adds to greenhouse gases

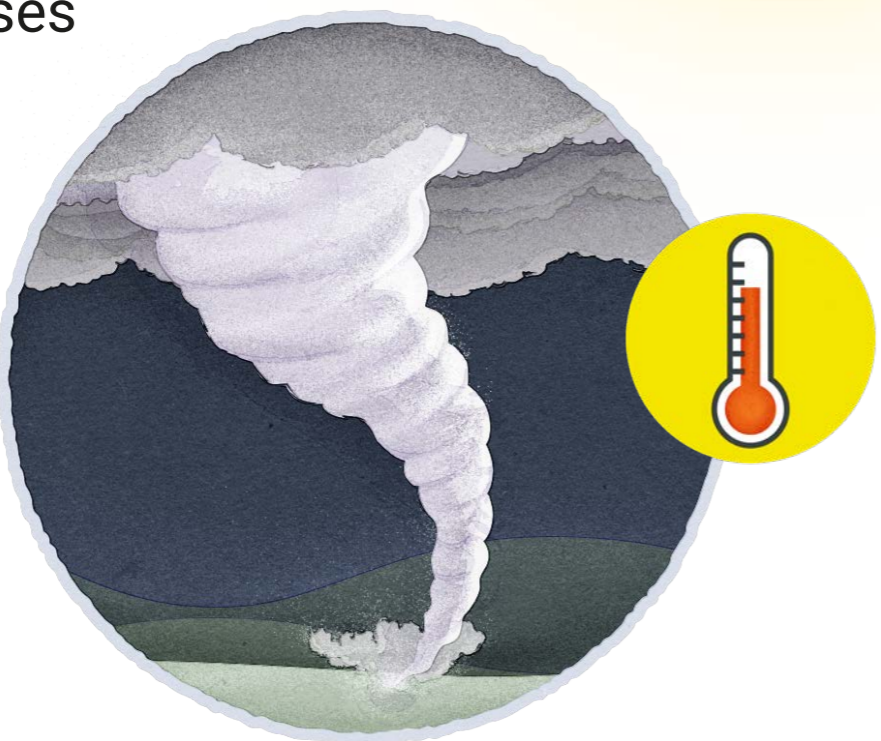
Solar radiation

Some radiation is reflected away from Earth



Burning **fossil fuels** produce **sulfur dioxide** and **nitrogen oxides**, which dissolve in rainwater to cause **acid rain**.

Burning **fossil fuels** also produce **carbon dioxide**, the main gas that causes the **greenhouse effect**. This effect has caused **climate change**, leading to more extreme weather events across the world.



Did you know ...? Wind and solar power are clean and **renewable** methods of generating electricity.